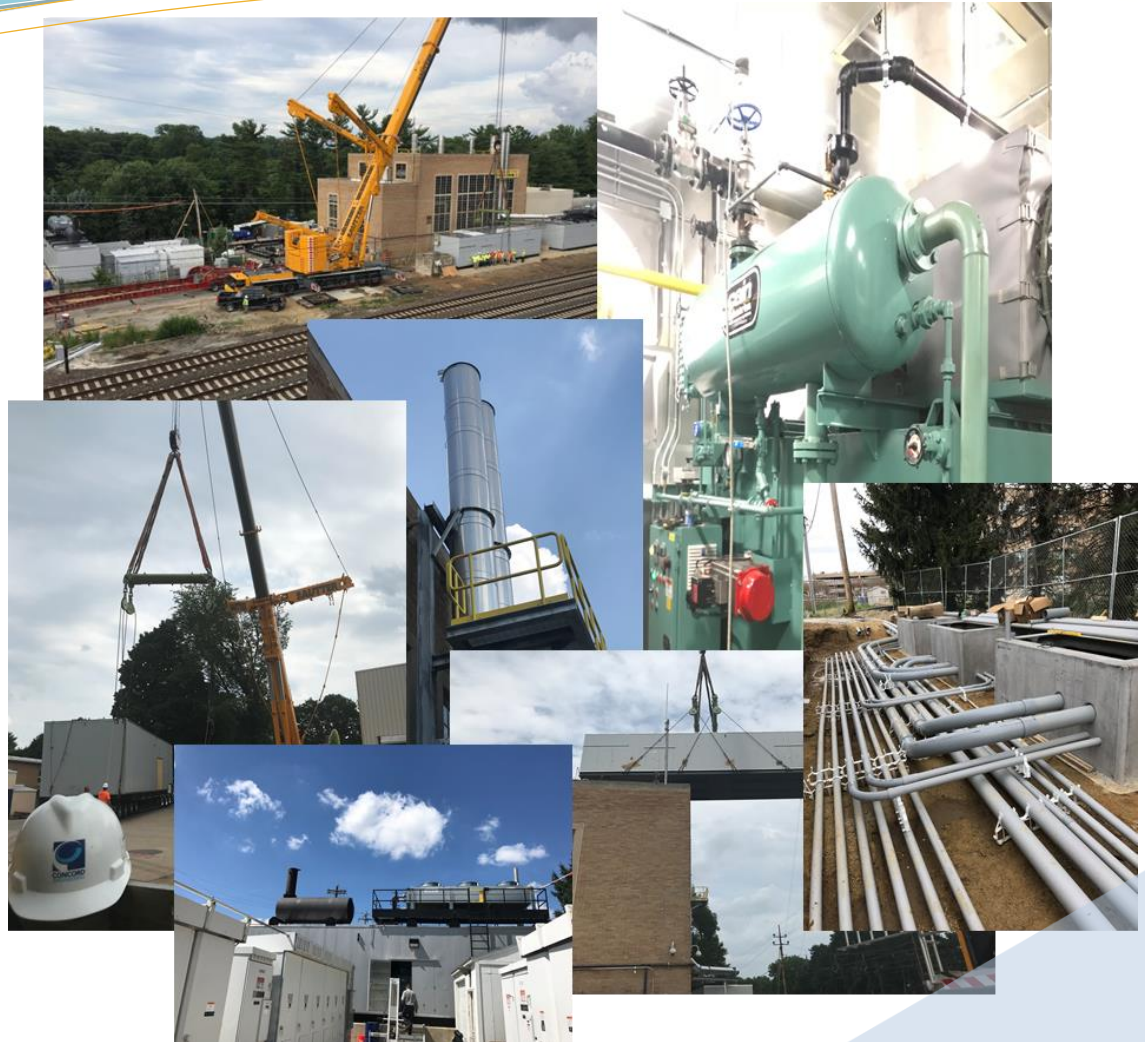




Villanova University CHP & Distributed Generation
Radnor, PA
Engineering, Construction Management at Risk & Commissioning

ABOUT THE CLIENT

Villanova University is a private research university located in a suburb northwest of Philadelphia, PA. There are more than 10,000 undergraduate, graduate and law students in the University's six colleges.



**DESIGN BUILDER FOR 6MW CHP & DISTRIBUTED GENERATION PROJECT
 RESILIENCY + DEMAND MANAGEMENT**

Concord is the Engineer of Record and Construction Manager at Risk for a new 6MW Combined Heat & Power and Distributed Generation facility. Concord participated with the project developer and owner to develop an engineering concept to compliment a 3rd party financed business model that emphasized resiliency and hedging the client against PJM ICAP and transmission charges as well local distribution charges.

The new installation will provide on-site electrical generation to allow the university to increase resiliency, reduce future electrical demand and, in turn, reduce the transmission and demand charges imposed from the electric utility and reduce the capacity charge from PJM. In addition, the project will provide Villanova the ability to purchase electricity and natural gas at a lower cost.

REFERENCE

Joseph P. Ungaro, PE
 Senior Project Manager
 Engineering and Construction
 Villanova University
 (610)519-8646
 Joseph.ungaro@villanova.edu

(856) 427-0200
 CONCORD-ENGINEERING.COM